

# Stock Related Information

## Number of shares (As of May 31, 2020)

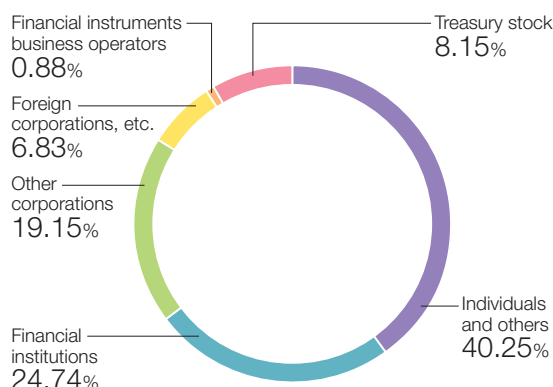
Number of shares authorized	36,000,000
Number of shares issued	9,735,000
Number of shareholders	5,614

### Major shareholders

Shareholders	Number of shares held (Thousands)	% of total shares held
The Master Trust Bank of Japan, Ltd. (Trust account)	487	5.45
East Japan Railway Company	480	5.36
Employees Stock Ownership Plan	416	4.65
NIPPON LIFE INSURANCE COMPANY	337	3.77
MUFG Bank, Ltd.	270	3.02
Sanshin Co., Ltd.	270	3.01
Toyo Denki Subcontractor Factories Shareholding Association	257	2.87
Japan Trustee Services Bank, Ltd. (Trust account)	235	2.63
BNP PARIBAS SECURITIES SERVICES LUXEMBOURG/JASDEC/JANUS HENDERSON HORIZON FUND	216	2.42
Masayoshi Yamauchi	213	2.38

(Note) The percentages of total shares held are calculated excluding 793,403 treasury stocks.

## Distribution of shares by type of shareholder

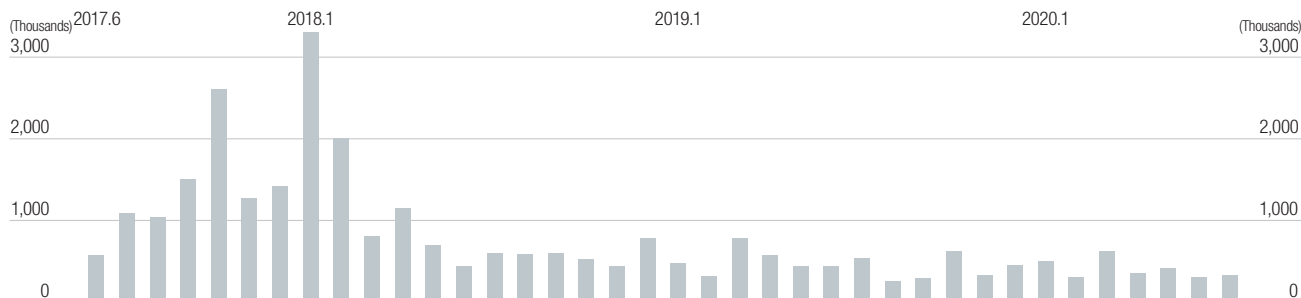


## Transition of share price

### Share price



### Trading volume



### Disclaimer on the forward-looking statements

Information in this corporate report contains forward-looking statements. Such statements were developed based on the information available at the time when this report was prepared. These forward-looking statements may be largely revised in the future, and the actual outcome could significantly vary from the stated or implied contents of such statements subject to various factors. This report is not intended to solicit investment. Investors are kindly asked to make your investment decision at your own judgment and responsibility. Numbers presented in 100 million yen or million yen are rounded down to the nearest respective unit.

# Company Profile

(as of May 31, 2020)

## Company Profile

**Company Name** TOYO DENKI SEIZO K.K. (TOYO ELECTRIC MFG. CO., LTD.)

**Established** June 20, 1918

**Capital** 4,998,390,000 yen

**Number of Employees** 1,227 (Consolidated) 841 (TOYO DENKI SEIZO K.K.)

**Head Office** Tokyo Tatemono Yaesu Building, 1-4-16, Yaesu, Chuo-ku, Tokyo, 103-0028, Japan  
TEL +81-3-5202-8121 (General Affairs Division)  
<https://www.toyodenki.co.jp/>

**Stock Exchange Listing** The Tokyo Stock Exchange, First Section

**Code Number** 6505

**Number of Shares Authorized** 36,000,000 shares

**Number of Shares Issued** 9,735,000 shares

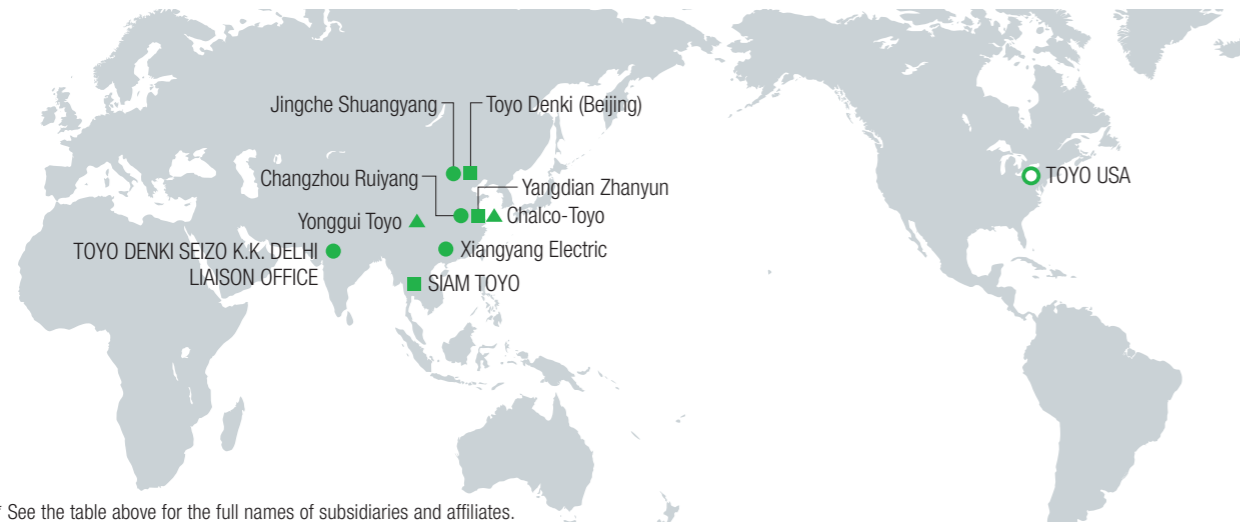
**Number of Shareholders** 5,614



## Subsidiaries and Affiliates (as of September 1, 2020)

○ Consolidated subsidiaries ● Affiliates accounted for by the equity method ■ Non-consolidated subsidiaries ▲ Affiliates not accounted for by the equity method

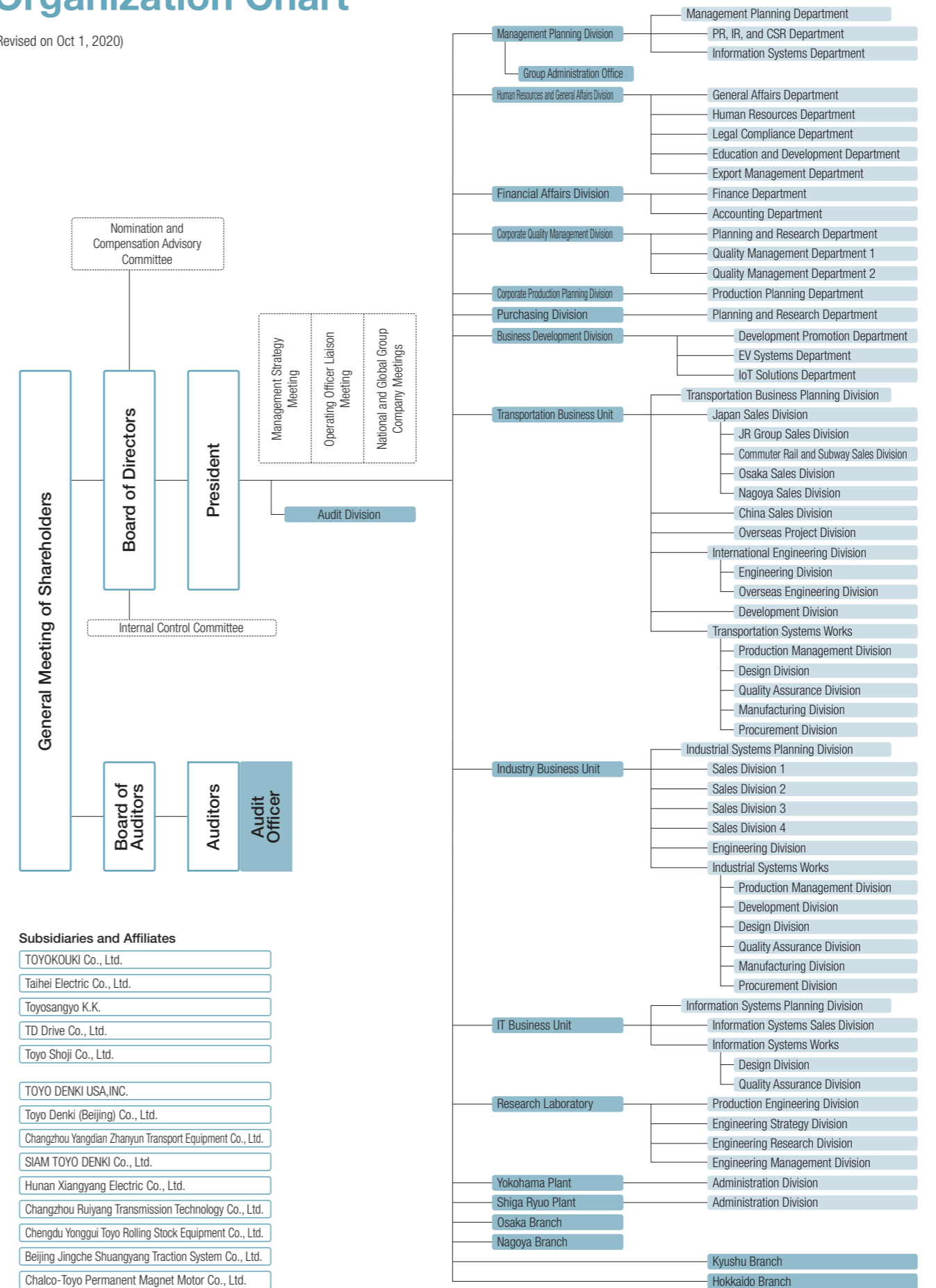
	Transportation Systems	Industrial Systems	Information Equipment Systems	Others
Japan	○ TOYOKOUKI Co., Ltd. ○ Taihei Electric Co., Ltd.	○ Toyosangyo K.K. ○ TD Drive Co., Ltd.		○ Toyo Shoji Co., Ltd.
Over-seas	■ Toyo Denki (Beijing) Co., Ltd. (China) ■ Changzhou Yangdian Zhanyun Transport Equipment Co., Ltd. (China) ○ TOYO DENKI USA, INC. (U.S) ● Hunan Xiangyang Electric Co., Ltd. (China) ● Changzhou Ruiyang Transmission Technology Co., Ltd. (China) ● Beijing Jingche Shuangyang Traction System Co., Ltd. (China) ▲ Chengdu Yonggui Toyo Rolling Stock Equipment Co., Ltd. (China)	■ SIAM TOYO DENKI Co., Ltd. (Thailand) ▲ Chalco-Toyo Permanent Magnet Motor Co., Ltd. (China)		



\* See the table above for the full names of subsidiaries and affiliates.

# Organization Chart

(Revised on Oct 1, 2020)



## Subsidiaries and Affiliates

- TOYOKOUKI Co., Ltd.
- Taihei Electric Co., Ltd.
- Toyosangyo K.K.
- TD Drive Co., Ltd.
- Toyo Shoji Co., Ltd.
- TOYO DENKI USA, INC.
- Toyo Denki (Beijing) Co., Ltd.
- Changzhou Yangdian Zhanyun Transport Equipment Co., Ltd.
- SIAM TOYO DENKI Co., Ltd.
- Hunan Xiangyang Electric Co., Ltd.
- Changzhou Ruiyang Transmission Technology Co., Ltd.
- Chengdu Yonggui Toyo Rolling Stock Equipment Co., Ltd.
- Beijing Jingche Shuangyang Traction System Co., Ltd.
- Chalco-Toyo Permanent Magnet Motor Co., Ltd.