

Stock Related Information

Number of shares (As of May 31, 2022)

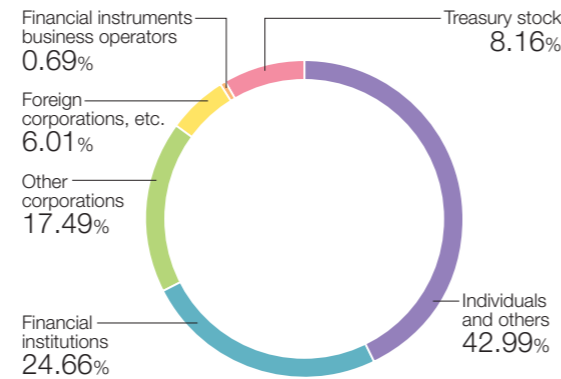
Number of shares authorized	36,000,000
Number of shares issued	9,735,000
Number of shareholders	5,891

Major shareholders

Shareholders	Number of shares held (Thousands)	% of total shares held
The Master Trust Bank of Japan, Ltd. (Trust account)	978	10.94
East Japan Railway Company	480	5.36
Employees Stock Ownership Plan	475	5.31
NIPPON LIFE INSURANCE COMPANY	337	3.77
Toyo Denki Subcontractor Factories Shareholding Association	302	3.38
MUFG Bank, Ltd.	270	3.02
Sanshin Co., Ltd.	270	3.02
BNP PARIBAS SECURITIES SERVICES LUXEMBOURG/JASDEC/JANUS HENDERSON HORIZON FUND	212	2.37
The Bank of Yokohama, Ltd.	207	2.32
Ohkuraya jutaku Inc.	206	2.30

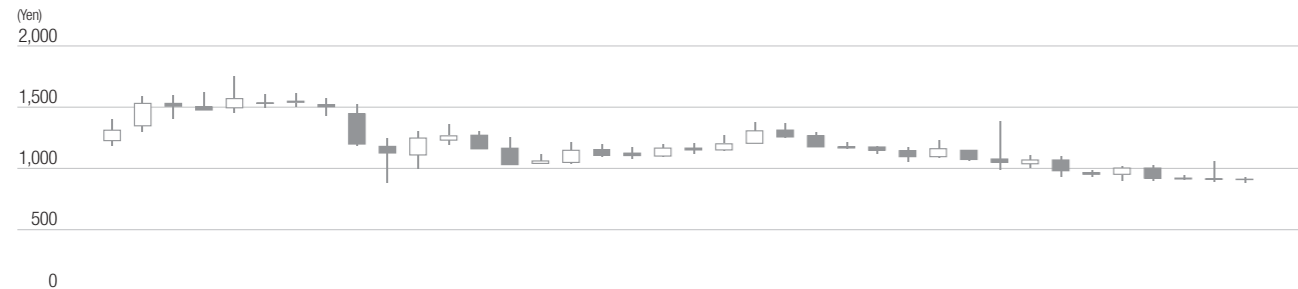
(Note) The percentages of total shares held are calculated excluding 794 treasury stocks.

Distribution of shares by type of shareholder

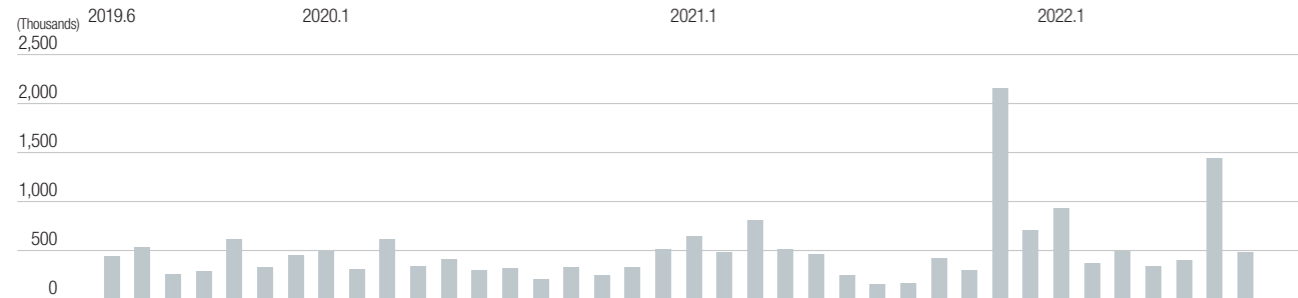


Transition of share price

Share price



Trading volume



Disclaimer on the forward-looking statements

Information in this corporate report contains forward-looking statements. Such statements were developed based on the information available at the time when this report was prepared. These forward-looking statements may be largely revised in the future, and the actual outcome could significantly vary from the stated or implied contents of such statements subject to various factors. This report is not intended to solicit investment. Investors are kindly asked to make your investment decision at your own judgment and responsibility. Numbers presented in 100 million yen or million yen are rounded down to the nearest respective unit.

Company Profile (as of May 31, 2022)

Company Profile

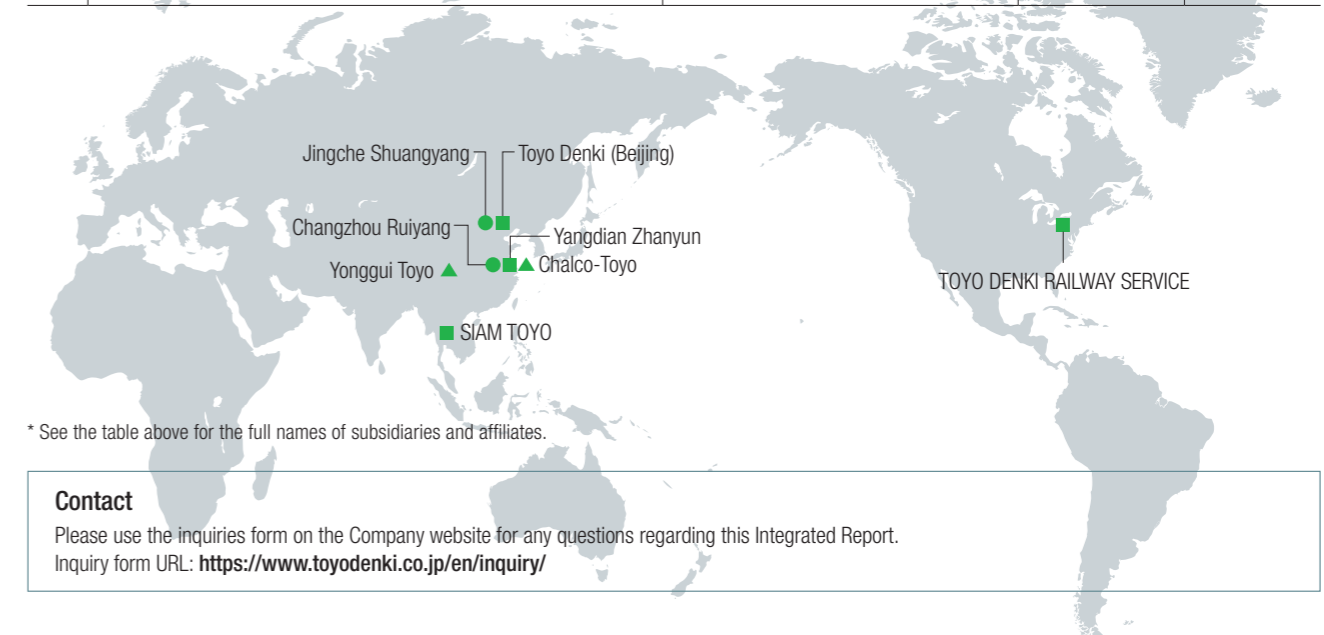
Company Name	TOYO DENKI SEIZO K.K. (TOYO ELECTRIC MFG. CO., LTD.)
Established	June 20, 1918
Capital	4,998,390,000 yen
Number of Employees	1,193 (Consolidated) 830 (TOYO DENKI SEIZO K.K.)
Head Office	1-4-16, Yaesu, Chuo-ku, Tokyo, 103-0028, Japan TEL +81-3-5202-8121 (General Affairs Division) https://www.toyodenki.co.jp/
Stock Exchange Listing	The Tokyo Stock Exchange, Standard Market
Code Number	6505
Number of Shares Authorized	36,000,000 shares
Number of Shares Issued	9,735,000 shares
Number of Shareholders	5,891



Subsidiaries and Affiliates

○ Consolidated subsidiaries ● Affiliates accounted for by the equity method ■ Non-consolidated subsidiaries ▲ Affiliates not accounted for by the equity method

	Transportation Systems	Industrial Systems	Information Equipment Systems	Others
Japan	○ TOYOKOUKI Co., Ltd. ○ Taihei Electric Co., Ltd.	○ Toyo Sangyo K.K. ○ TD Drive Co., Ltd.		○ Toyo Shoji Co., Ltd.
Over-seas	■ Toyo Denki (Beijing) Co., Ltd. (China) ■ Changzhou Yangdian Zhanyun Transport Equipment Co., Ltd. (China) ● Changzhou Ruiyang Transmission Technology Co., Ltd. (China) ● Beijing Jingche Shuangyang Traction System Co., Ltd. (China) ▲ Chengdu Yonggui Toyo Rolling Stock Equipment Co., Ltd. (China) ■ TOYO DENKI RAILWAY SERVICE, LLC. (U.S.)	■ SIAM TOYO DENKI Co., Ltd. (Thailand) ▲ Chalco-Toyo Permanent Magnet Motor Co., Ltd. (China)		

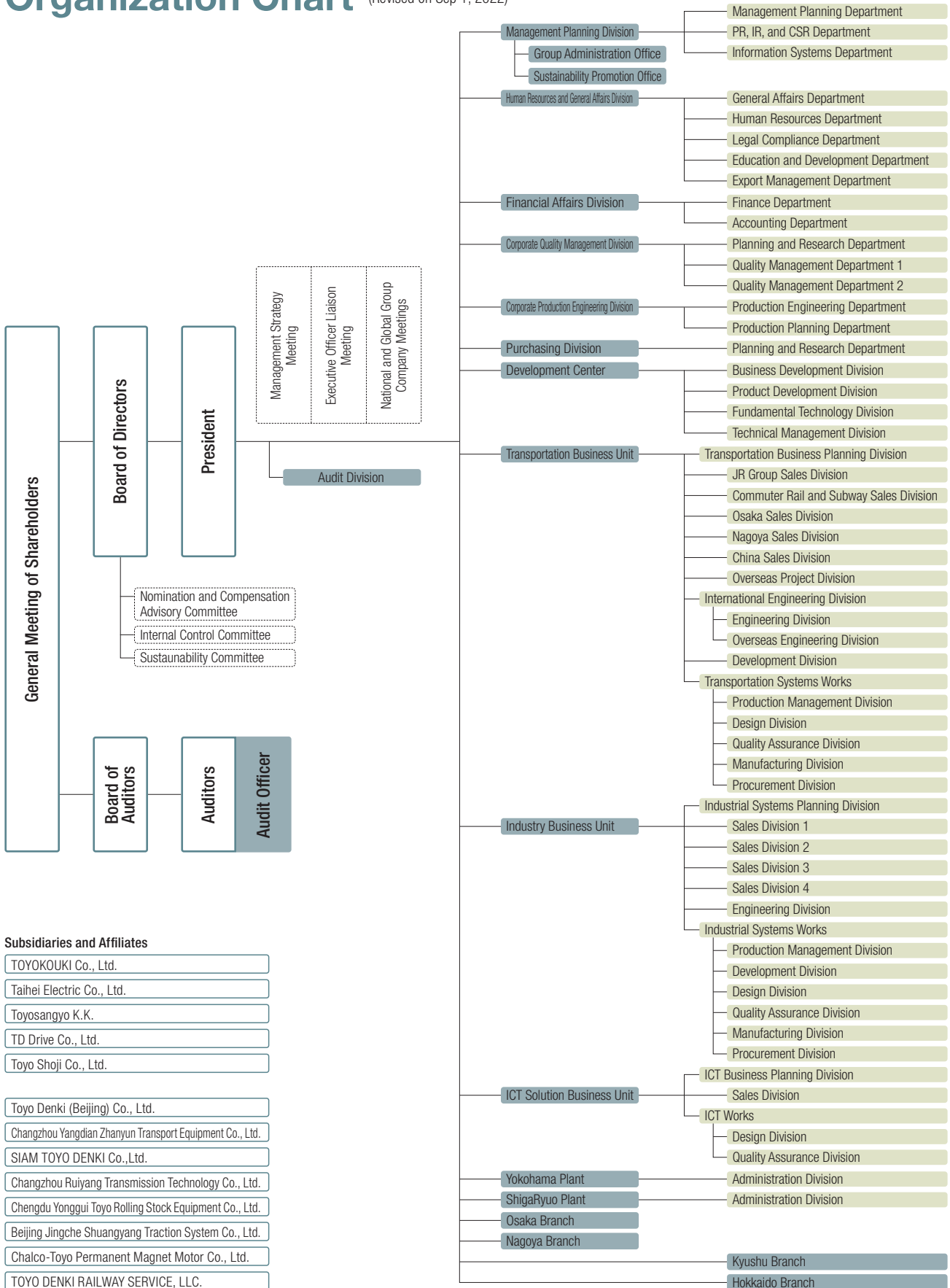


* See the table above for the full names of subsidiaries and affiliates.

Contact

Please use the inquiries form on the Company website for any questions regarding this Integrated Report.
Inquiry form URL: <https://www.toyodenki.co.jp/en/inquiry/>

Organization Chart (Revised on Sep 1, 2022)



Subsidiaries and Affiliates

- TOYOKOUKI Co., Ltd.
- Taihei Electric Co., Ltd.
- Toyosangyo K.K.
- TD Drive Co., Ltd.
- Toyo Shoji Co., Ltd.
- Toyo Denki (Beijing) Co., Ltd.
- Changzhou Yangdian Zhanyun Transport Equipment Co., Ltd.
- SIAM TOYO DENKI Co., Ltd.
- Changzhou Ruiyang Transmission Technology Co., Ltd.
- Chengdu Yonggui Toyo Rolling Stock Equipment Co., Ltd.
- Beijing Jingche Shuangyang Traction System Co., Ltd.
- Chalco-Toyo Permanent Magnet Motor Co., Ltd.
- TOYO DENKI RAILWAY SERVICE, LLC.