

Stock Related Information

Number of shares (as of May 31, 2024)

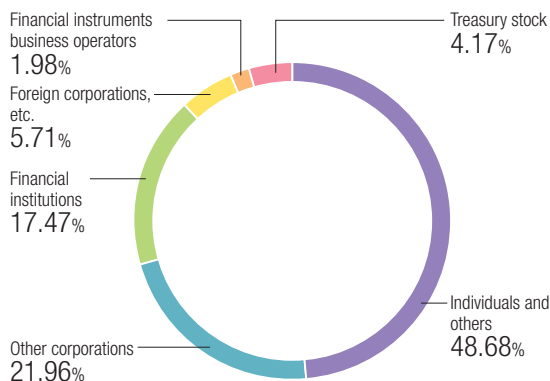
Number of Shares Authorized	36,000,000
Number of shares issued	9,735,000
Number of Shareholders	6,159

Major shareholders

Shareholders	Number of shares held (Thousands)	% of total shares held
East Japan Railway Company	973	10.43
Employees Stock Ownership Plan	508	5.45
The Master Trust Bank of Japan, Ltd. (Trust account)	453	4.86
Toyo Denki Subcontractor Factories Shareholding Association	353	3.79
NIPPON LIFE INSURANCE COMPANY	337	3.62
MUFG Bank, Ltd.	270	2.89
Sanshin Co., Ltd.	270	2.89
The Bank of Yokohama, Ltd.	207	2.22
Ohkuraya jutaku Inc.	206	2.20
Tsuneo Homma	153	1.64

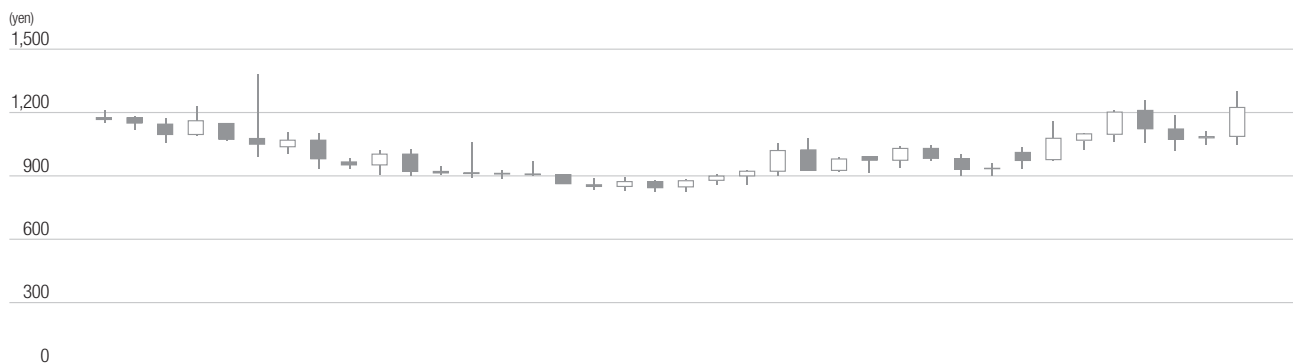
(Note) The percentages of total shares held are calculated excluding 406 treasury stocks.

Distribution of shares by type of shareholder

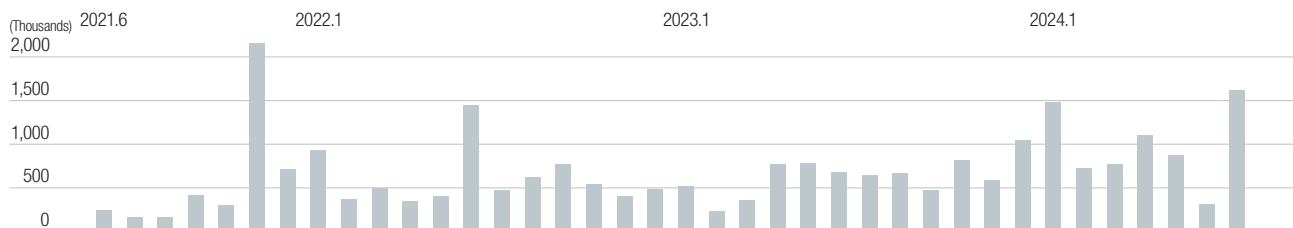


Transition of share price

Share price



Trading volume



Disclaimer on the forward-looking statements

Information in this corporate report contains forward-looking statements. Such statements were developed based on the information available at the time when this report was prepared. These forward-looking statements may be largely revised in the future, and the actual outcome could significantly vary from the stated or implied contents of such statements subject to various factors. This report is not intended to solicit investment. Investors are kindly asked to make your investment decision at your own judgment and responsibility. Numbers presented in 100 million yen or million yen are rounded down to the nearest respective unit.

Company Profile (as of May 31, 2024)

Company Profile

Company Name TOYO DENKI SEIZO K. K. (TOYO ELECTRIC MFG. CO., LTD.)

Established June 20, 1918

Capital 4,998,390,000 yen

Number of Employees 1,147 (consolidated) 791 (TOYO DENKI SEIZO K.K.)

Head office 1-4-16, Yaesu, Chuo-ku, Tokyo, 103-0028, Japan
TEL +81-3-5202-8121
<https://www.toyodenki.co.jp/>

Stock Exchange Listing The Tokyo Stock Exchange, Standard Market

Code Number 6505

Number of Shares Authorized 36,000,000

Number of Shares Issued 9,735,000

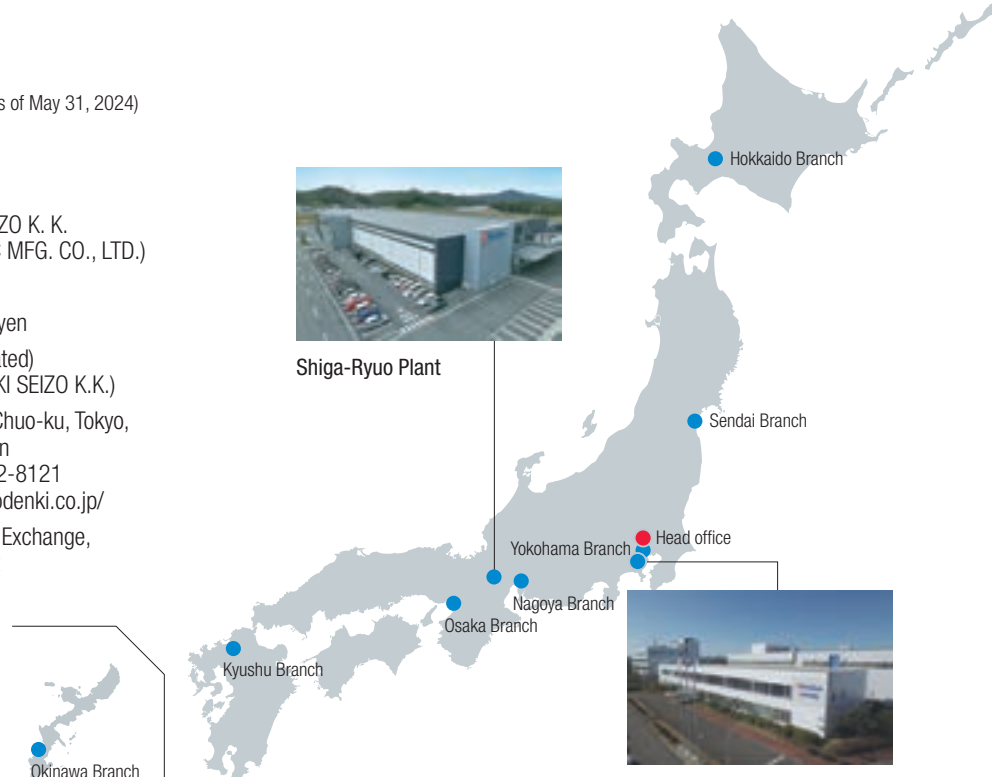
Number of Shareholders 6,159



Shiga-Ryuo Plant



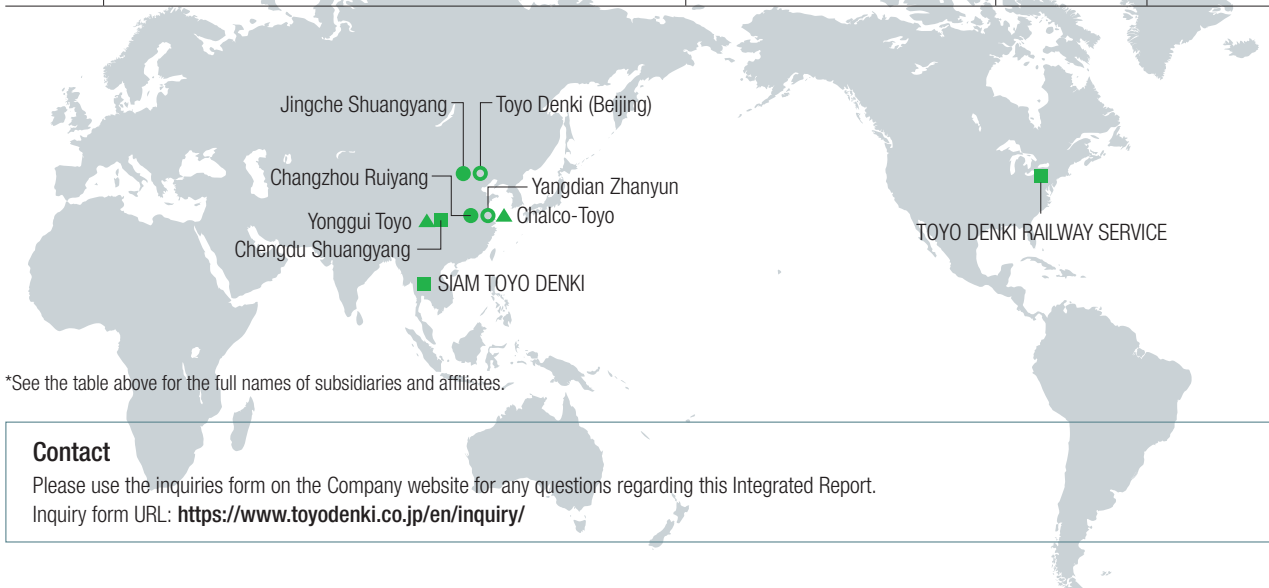
Yokohama Plant



Subsidiaries and Affiliates

○ Non-consolidated subsidiaries ● Affiliates accounted for by the equity method ■ Non-consolidated subsidiaries ▲ Affiliates not accounted for by the equity method

	Transportation Business	Industry Business	ICT Solution Business	Other, net
Japan	○ Toyokouki Co., Ltd. ○ TAIHEI ELECTRIC Co., Ltd.	○ Toyo Sangyo Co., Ltd. ○ TD. Drive Mfg. Co., Ltd.		○ Toyo Shoji Co., Ltd.
Overseas	○ Toyo Denki (Beijing) Co., Ltd. (China) ○ Changzhou Yangdian Zhanyun Transport Equipment Co., Ltd. (China) ● Changzhou Ruiyang Transmission Technology Co., Ltd. (China) ● Beijing Jingche Shuangyang Traction System Co., Ltd. (China) ■ Chengdu Shuangyang Rail Transit Equipment Co., Ltd. (China) ■ TOYO DENKI RAILWAY SERVICE, LLC (U.S.) ▲ Chengdu Yonggui Toyo Rolling Stock Equipment Co., Ltd. (China)	■ SIAM TOYO DENKI Co., Ltd. (Thailand) ▲ Chalco-Toyo Permanent Magnet Motor Co., Ltd. (China)		

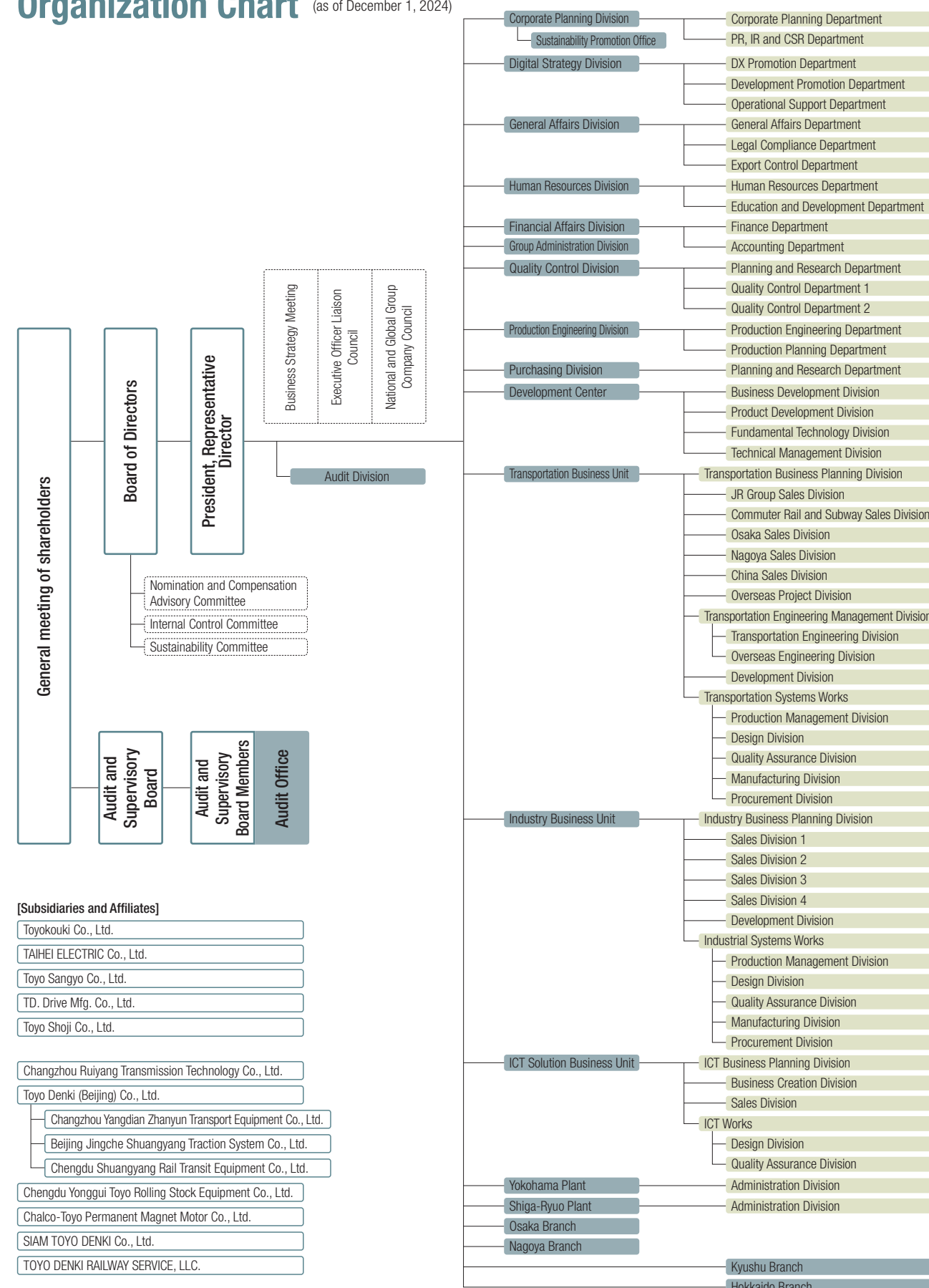


*See the table above for the full names of subsidiaries and affiliates.

Contact

Please use the inquiries form on the Company website for any questions regarding this Integrated Report.
Inquiry form URL: <https://www.toyodenki.co.jp/en/inquiry/>

Organization Chart (as of December 1, 2024)



[Subsidiaries and Affiliates]

- Toyokouki Co., Ltd.
- TAIHEI ELECTRIC Co., Ltd.
- Toyo Sangyo Co., Ltd.
- TD. Drive Mfg. Co., Ltd.
- Toyo Shoji Co., Ltd.
- Changzhou Ruiyang Transmission Technology Co., Ltd.
- Toyo Denki (Beijing) Co., Ltd.
- Changzhou Yangdian Zhanyun Transport Equipment Co., Ltd.
- Beijing Jingche Shuangyang Traction System Co., Ltd.
- Chengdu Shuangyang Rail Transit Equipment Co., Ltd.
- Chengdu Yonggui Toyo Rolling Stock Equipment Co., Ltd.
- Chalco-Toyo Permanent Magnet Motor Co., Ltd.
- SIAM TOYO DENKI Co., Ltd.
- TOYO DENKI RAILWAY SERVICE, LLC.